



## Construction No. 308B TGKX.308B Roof Deck Constructions

[Page Bottom](#)

### Design/System/Construction/Assembly Usage Disclaimer

- Authorities Having Jurisdiction should be consulted in all cases as to the particular requirements covering the installation and use of UL Listed or Classified products, equipment, system, devices, and materials.
- Authorities Having Jurisdiction should be consulted before construction.
- Fire resistance assemblies and products are developed by the design submitter and have been investigated by UL for compliance with applicable requirements. The published information cannot always address every construction nuance encountered in the field.
- When field issues arise, it is recommended the first contact for assistance be the technical service staff provided by the product manufacturer noted for the design. Users of fire resistance assemblies are advised to consult the general Guide Information for each product category and each group of assemblies. The Guide Information includes specifics concerning alternate materials and alternate methods of construction.
- Only products which bear UL's Mark are considered as Classified, Listed, or Recognized.

### Roof Deck Constructions

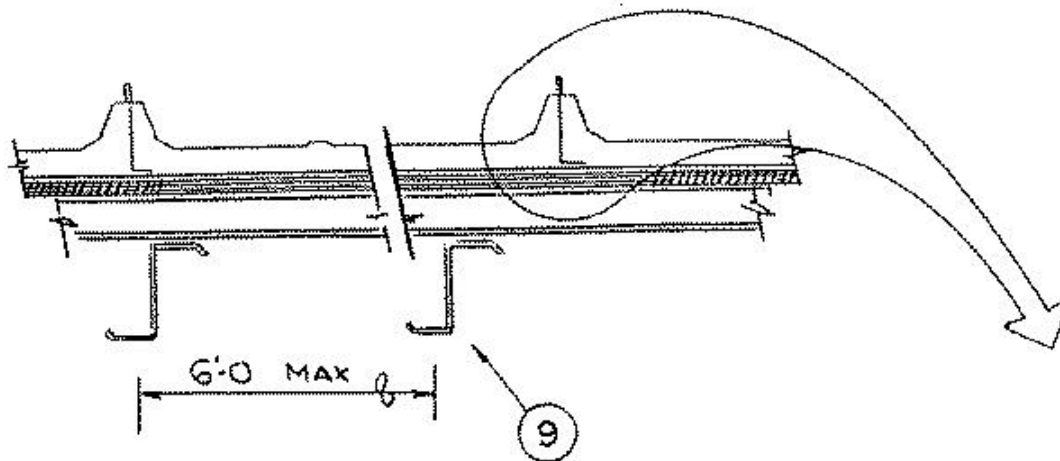
[See General Information for Roof Deck Constructions](#)

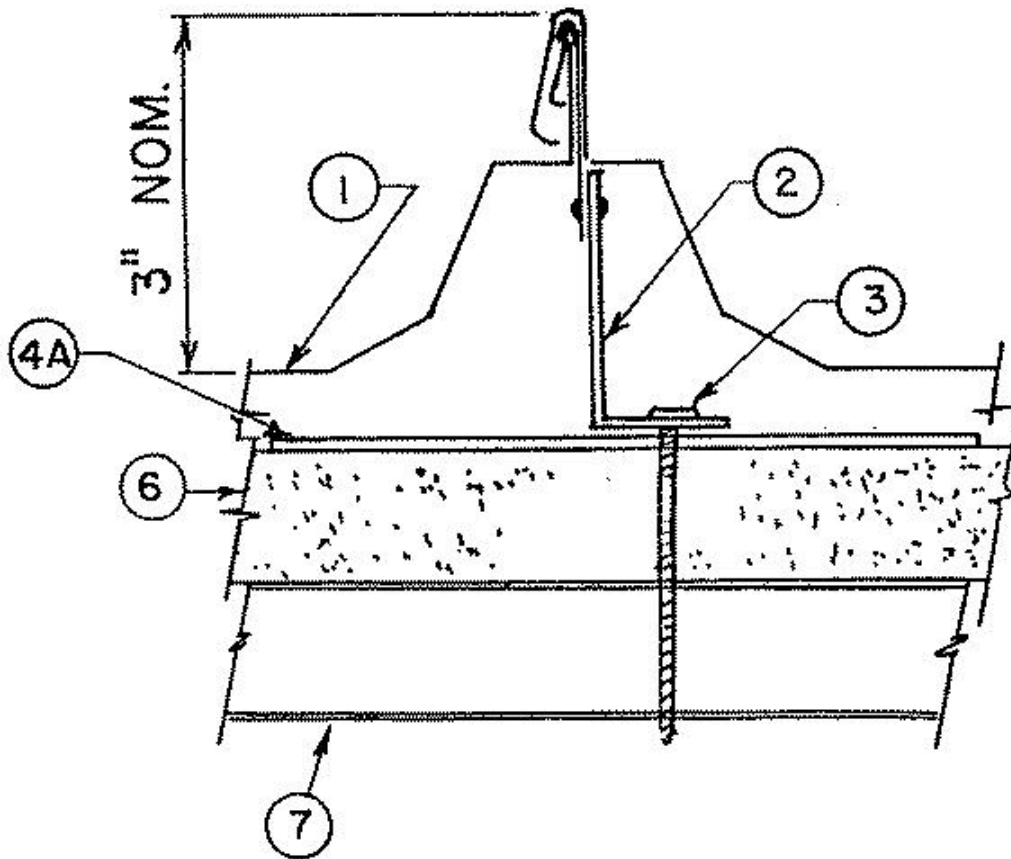
## Construction No. 308B

February 22, 2012

**Uplift – Class 90**

**Fire Not Investigated**





1. **Metal Roof Deck Panels\*** — 24 MSG min coated steel. Panels continuous over two or more spans. End laps to occur adjacent to purlin with panels overlapped 3 in. A line of sealant may be used at panel ends and side laps.

**A & S BUILDING SYSTEMS L P** ([View Classification](#)) — "Ultra-Dek"

**B C STEEL BUILDINGS INC** ([View Classification](#)) — "BCL-SD"

**CENTRAL STATES MFG INC** ([View Classification](#)) — "Central-Loc"

**CENTRAL TEXAS METAL ROLLFORMING INC** ([View Classification](#)) — "Shurloc 300"

**CHIEF INDUSTRIES INC** ([View Classification](#)) — "STC".

**CORLE BUILDING SYSTEMS** ([View Classification](#)) — "Corle Snap Seal".

**KIRBY BUILDING SYSTEMS INC** ([View Classification](#)) — "KLS 2100" .

**MBCI** ([View Classification](#)) — "Ultra-Dek ".

**MESCO METAL BUILDINGS** ([View Classification](#)) — "Ultra-Dek"

**NCI BUILDING SYSTEMS L P** ([View Classification](#)) — " Ultra-Dek ".

**PINNACLE STRUCTURES INC** ([View Classification](#)) — "PINNACLE U-DEK"

**TEXAS BUILDING AND ROOFING SUPPLIES**

**INC** — Standing Seam" Panel

**UNITED STRUCTURES OF AMERICA INC** ([View Classification](#)) — "Guardian I" , "Guardian II" (seamed only).

**WHIRLWIND STEEL BUILDINGS INC** ([View Classification](#)) — "Super-Seam II".

**2. Roof Deck Fasteners\*** — (Panel Clips) —Clip used with an upper tab clip formed to engage the metal roof deck panel rib (Item 1). The height of the clip to be 3-3/8 in. when no thermal spacer is used, and 4-3/8 in. when a thermal spacer is used (Item 5). Clips are spaced 5 ft. OC max along length of panels, located at the panel sides with guide holes in bottom to accommodate two screw fasteners (Item 3).

**BUILDING PRODUCTS DEVELOPMENT INC** ([View Classification](#)) — "NC34503", "NC34504"

**CHIEF INDUSTRIES INC** ([View Classification](#)) — "STC"

**KIRBY BUILDING SYSTEMS INC** ([View Classification](#)) — "Kirbylok 2000-Clip" or "Kirbylok 2000 Clip II".

**NCI BUILDING SYSTEMS L P** ([View Classification](#)) — " Ultra-Dek Articulating Clip " or "Ultra-Dek Fixed Clip" or "Ultra-Dek Floating Clip" or "Ultra-Dek Sliding Clip"..

**UNITED STRUCTURES OF AMERICA INC** ([View Classification](#)) — "Guardian I".

**2A. Roof Deck Fasteners\*** — (Panel Clips) — fixed or sliding type fabricated from 0.032 in. thick steel. Width to be 3 in., heights to be 3- 3/8 in. when no thermal spacer (Item No. 4) is used and 4-3/4in. when thermal spacer is used. Clips spaced 5 ft. on center, located at panel slides over purlins.

**NCI BUILDING SYSTEMS L P** ([View Classification](#)) — "Ultra-Dek Fixed Clip" or "Ultra-Dek Sliding Clip"

**3. Fasteners — (Screws)** — Fasteners used to attach panel clips and bearing plates (Item 2 and 4A) through rigid installation (or optional plywood or OSB when bearing plate not used) and into metal deck (Item 7) to be No. 14 dia. with Phillips head. Two screws per clip when Item 2 is used. When metal deck is not used, fasteners used to attach panel clips (Item 2) for panel clip-to-purlins are to be No. 14 dia. Type A, hex washer head with 5/8 in. O.D. washer. Two screws per clip. Fasteners to be installed into purlins (Item 9). Fastener length to be min 1/2 in. longer than total thickness of optional plywood or OSB substructure (Item 4), insulation (Item 6) and metal deck (Item 7). Fasteners used to attach panel clips (Item 2A) for panel clip-to-purlins to be No. 12-14 by 1-1/4 in. long self-drilling, self-tapping, hex-head screw with a separate 5/8 in. O.D. neoprene washer. Two screws used for fixed type clip and one screw used for sliding type. Fasteners to be installed into purlins (Item 9).

Screws used at end lap are to be 1/4-14 by 1 in. long with 3/8 in. hex-washer head and separate 5/8 in. neoprene steel washer. Five (5) fasteners are to be used in the flat section of the end lap panel with the first fastener located 3 in. from either rib, and then spaced in a 3-6-6-3 in. pattern.

An additional fastener is to be located at the second slant segment of the rib on both sides of the end lap panel, and one additional fastener located at the first slanted segment on both sides of one rib. Fasteners used with alternate 16 MSG min thick coated steel upper section to be No. 14 by 1 in. long self-tapping fastener. First fastener located 3/8 in. from first slanted segment in a 4-5-1/2-5-1/2-4 in. pattern. Screws used to attach optional plywood or OSB substructure (Item 4) to metal deck (Item 7) to be No. 14 type with Phillips head. Fastener length to be min of 1/2 in. longer than total thickness of the plywood, insulation and metal deck. Spacing to be 6 in. O.C. at plywood ends and 12 in. O.C. at 2 ft., 0 in. pattern down length of plywood. (Total of 33 fasteners per 4 by 8 ft. plywood sheet).

(Alternate — When bearing plates replace plywood or OSB). An optional No. 10 by 1 in. self-drilling fastener may be used to attach clip to the bearing plate when installer chooses to install rigid board insulation and use bearing plate to hold it in place until clips and panels are installed.

**4. Substructure (Plywood or OSB) — (Optional) — (Not shown)** — Plywood decking to be nom 1/2 in. thick, exposure sheathing span C-D 40/20 plywood or oriented strand board (OSB), nominal 7/16 in. thick, 4X8 ft. To be installed on top of rigid insulation (Item 6) max thickness 4 in. and in lieu of bearing plate (Item 4A).

**4A. Substructure (Bearing Plates) — (Optional)** — To be used in lieu of plywood or OSB (Item 4) with rigid insulation (Item 6) max thickness of 4.4 in. Bearing plates to be 16 MSG min coated steel. Located under each clip (Item 2) for support.

5. **Thermal Spacer — (Optional) — (Not shown)** — Polystyrene, 1 in. max thickness 3 in. wide, cut to fit between panel clips.
6. **Rigid Insulation** — (Optional) — Foamed plastic, min 1 in. thickness, max thickness 4 in. when plywood or OSB is used and 4.4 in. when bearing plates are used. Density to be a min 2 pcf.
- 6A. **Gypsum Board — (Optional)(Not shown)** — Any 5/8 in. thick gypsum wallboard supplied in sheets 2 x 4 to 4 x 12 ft. Applied perpendicular to steel deck direction with adhesive. End joints to occur over crests of steel roof deck and to be staggered 2 ft. in adjacent rows. The total cumulative thickness of the rigid board (Item 6) and gypsum board may not exceed total thickness shown under Item 6.
- 6B. **Waterproof Membrane — (Optional)(Not shown)** — Used to protect plywood or OSB (Item 4). Installed under panels (Item 1).
- 6C. **Vapor Barrier — (Optional)(Not shown)** — Installed on top of metal deck (Item 7) or on top of gypsum wallboard (Item 6A) if used. Minimum 6 mil plastic sheet.
7. **Metal Deck** — (Optional) — 22 MSG min thickness coated steel. Min depth 1-1/2 in. with ribs at 6 in. O.C. End lap to be 4 in. min and occur over purlin. Metal deck to be welded to purlin in every other low flute, except for the end laps which are welded in every low flute.
8. **End-Lap Plate Assembly — (Not Shown)** — Used at panel end laps consisting of a lower section, 5-5/8 in. wide, with a 1/8 in. leg and formed to the general profile of the panel and having four 1 in. wide by 3/4 in. long tabs for sliding over the end panel. Upper section to be 2 in. wide and also formed to the general profile of the panel. Upper section to have ribs formed with reinforcement. Both parts min 18 MSG coated steel. Alternate 16 MSG min thick coated steel upper section 1-1/2 in. wide formed to fit the general profile of the panel. Five 5/16 in. diam guide holes located in the flat area only.
9. **Purlin** — Min 14 MSG steel (55,000 psi min yield strength).

\*Bearing the UL Classification Mark

Last Updated on 2012-02-22

---

[Questions?](#)

[Print this page](#)

[Notice of Disclaimer](#)

[Page Top](#)

© 2012 UL LLC

The appearance of a company's name or product in this database does not in itself assure that products so identified have been manufactured under UL's Follow-Up Service. Only those products bearing the UL Mark should be considered to be Listed and covered under UL's Follow-Up Service. Always look for the Mark on the product.

UL permits the reproduction of the material contained in the Online Certification Directory subject to the following conditions: 1. The Guide Information, Designs and/or Listings (files) must be presented in their entirety and in a non-misleading manner, without any manipulation of the data (or drawings). 2. The statement "Reprinted from the Online Certifications Directory with permission from UL" must appear adjacent to the extracted material. In addition, the reprinted material must include a copyright notice in the following format: "© 2012 UL LLC".